

87654321

REVISIONS			
REV	DESCRIPTION	DATE	APPROVED
A	Revised & Redrawn Was "FVTX HALF STATION 2,3,4 SUPPORT PANEL CORE"	05/19/10	RJ Ponchione

#4-40 UNC-2B THRU
⊕ ⌀ .25 (M) A B C

100.00

2.31

4.6

C

R157.7

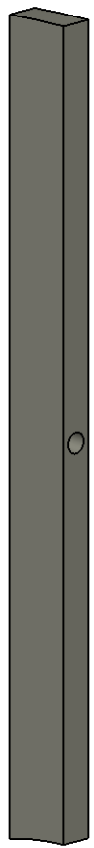
10.0

A

B

R45.3

⊕ ⌀ .25 (M) A B C

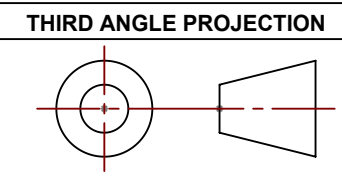


MATERIAL: CARBON LOADED PEEK

NOTES: UNLESS OTHER WISE SPECIFIED

1. ALL DIMENSIONS IN MILLIMETERS
2. DIMENSIONS AND TOLERANCING PER ASME Y14.5M-1994
3. SURFACE TEXTURE PER ANSI/ASME B 46.1-1985
4. REMOVE ALL BURRS AND BREAK SHARP EDGES TO A MAXIMUM OF .4
5. ALL INSIDE CORNERS TO BE .4 RADIUS MAX
6. COUNTERSINK 82 DEGREES ALL TAPPED HOLES TO MAJOR DIAMETER
7. COUNTERSINK 82 DEGREES APPROXIMATELY .08/1.5 DEEP ALL DRILLED HOLES
8. PARTS TO BE THOROUGHLY CLEANED TO REMOVE ALL OIL, GREASE, DIRT AND CHIPS
9. PART NUMBER (DRAWING NO., DASH NO., REVISION NO., SERIAL NO.) TO BE CLEARLY MARKED ON THE PACKAGING BAG OR PART ITSELF.

THIS DOCUMENT CONTAINS INFORMATION THAT IS THE PROPRIETARY PROPERTY OF HYTEC, INC.
REPRODUCTION, DISCLOSURE, OR RELEASE TO OTHERS, MANUALLY OR ELECTRONICALLY,
IS STRICTLY PROHIBITED WITHOUT THE PRIOR WRITTEN CONSENT OF HYTEC, INC.



UNLESS OTHERWISE SPECIFIED: DIMENSIONS ARE IN MILLIMETERS -TOLERANCES-		CAD GENERATED DRAWING, DO NOT MANUALLY UPDATE DO NOT SCALE DRAWING		<div>HYTEC, INC</div>	
DECIMALS X = +/- .5 .X = +/- .1 .XX = +/- .01 XXX = +/- .001		ANGULAR .X = +/- .30° .XX = +/- .15° SURFACE FINISH = 250		TITLE PHENIX CENTRAL UPGRADE FVTX HALF STATION 2,3,4 SUPPORT PANEL HANDLE INSERT	
FINISH				DWG. NO.	
				SIZE	
				SHEET NO.	
PART NO.				111-PHX-02-3901 D 1 of 1	
111-PHX-02-3901-1				SCALE 2:1	
				REVISION A	

87654321